

## the history

Northern Illinois Hospice and Grief Center has provided grief counseling services and summer camps to children in Winnebago and Boone Counties since 1992.



Camp Erin was created and is funded in part by The Moyer Foundation, a non-profit organization established by Major League All-Star pitcher Jamie Moyer and his wife, Karen.

Camp Erin is named in memory of the Moyers' friend, Erin Metcalf, who was diagnosed with cancer at the age of 15 and died two years later.

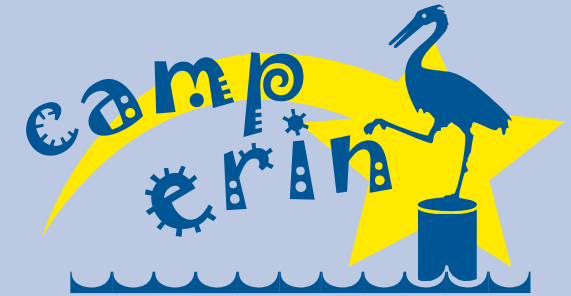
For information about The Moyer Foundation, visit [www.moyerfoundation.org](http://www.moyerfoundation.org).

Northern Illinois Hospice and Grief Center operates as a 501(c)(3) not-for-profit organization. All donations are tax deductible to the extent allowed by law.



NORTHERN ILLINOIS  
Hospice and  
Grief Center  
4215 Newburg Road  
Rockford, Illinois 61108

RETURN SERVICE REQUESTED



The Moyer Foundation  
Northern Illinois Hospice and Grief Center



**A summer camp for Rockford and  
Chicago area children and teens  
ages 6 to 17**

**July 5-8, 2012  
Williams Bay, Wisconsin**

NONPROFIT ORG.  
U.S. POSTAGE PAID  
ROCKFORD, IL  
PERMIT NO. 524

## camp erin

Camp Erin, the largest bereavement camp in the country, is designed for children and teens ages 6 to 17 who have experienced the death of someone close to them. Led by grief professionals and trained volunteers, the four day – three night experience is filled with traditional, fun, camp activities, grief education and emotional support. Camp Erin provides a unique opportunity for peer bonding between children and teens facing a similar life circumstance. Camp is offered free to all families.



The goal of Camp Erin is to provide a supportive and caring environment for children and teens affected by the loss of a loved one.

## when

July 5-8, 2012

## where

Wesley Woods Conference Center,  
Williams Bay, WI

## information

To register, or for more information about Camp Erin, including ways you can help, contact Northern Illinois Hospice and Grief Center at 815-398-0500 or visit [www.rockfordgrief.org](http://www.rockfordgrief.org).

## highlights

- A beautiful setting
- Peer support
- Professional grief counselors
- Trained volunteers
- Outdoor activities
- Team-building



*"For five years I have been carrying the death of my dad, but during the ceremony we did here at camp, now I think I am ready to let go and remember the good times."*  
Jessica, age 15

Transportation will be provided to and from Camp Erin, Wesley Woods Conference Center, Williams Bay, Wisconsin. Campers will depart from and return to Northern Illinois Hospice and Grief Center in Rockford, Illinois, which is one hour from Williams Bay.

